

HIGH SPEED PRESS

The 6 Tonne model that incorporates 'larger press' technology

To satisfy the increasing demand for more sophistication in lower tonnage presswork, 'Worcester Presses' have developed a press that offers high output with greater control of tooling life. This model is of a wide range.

Take advantage of the following benefits:

- Total tool protection from rapid response friction clutch and brake unit
- Tool wear minimised due to accurate slide location and extremely rigid cast iron press frame
- Self-monitoring, centralised control system for trouble free operation
- Variable speed to maximise output for all applications
- Suitable for both 1st and 2nd operation production
- Increased safety with totally enclosing frame and guards

We now offer fully engineered packages that include special tooling for use with our presses. Providing trials and inspection can be arranged prior delivery.



WORCESTER PRESSES



Features:

Dual in-line solenoid operated valves.

Alloy steel crankshaft Pitman with eccentric incorporating bronze bearing bush.

Barring slot for tool setting.

Slide with breechblock and tool fixing flanges. Extended slideways for accurate alignment.

Control system incorporates sensing of: oil, air, tool and guards. Touch screen control: stroking, inching, barring, feed and injection. Stroke counter and speed indicator included.

Control for variable speed, centralised autolube system.

Robust one-piece press frame.

All guards and covers are interlocked with control system.

Ancillary equipment:

- Height Stand
- Special Stroke lengths
- Top Knockout
- Special Speeds
- Air Injection
- Tool Monitoring Systems
- Over/Under Load systems
- Die cushion
- Rapid response 2nd Operation

The front photograph illustrates a standard machine.

Full sales and service back-up is provided by engineers from:
'Worcester Presses Ltd'

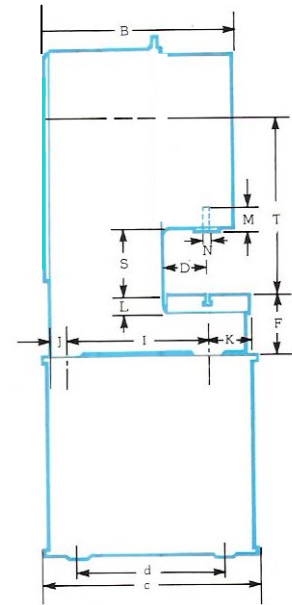
Rear View:



Factory Options:

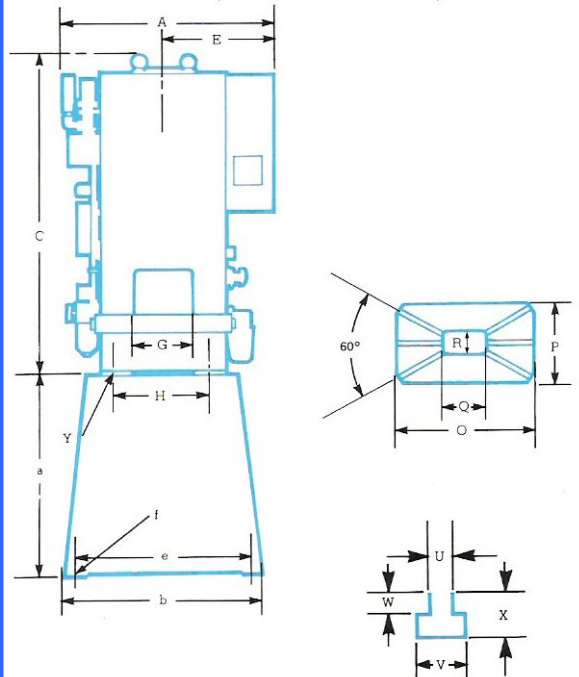
- Electronic Cams
- Height Stand
- Special Stroke lengths
- Top Knockout
- Special speeds

(Rear Guard Removed for photographic purposes only)



Dimensions & Specifications – Maximum capacity 6.3 tonne

Ram	M	65	Stand Dimensions	a	700
	N	25.4		b	1000
Tool fixing Holes	j	12		c	750
Tee Slot	V	32		d	490
	W	21		e	760
	X	35		f	15
Bed Plates	O	570	Two-Fixed Strokes Available		20/30
	P	300			
	Q	200	Maximum Tool Height (Ram BDC, Adjust up)		320-325
	R	80			
Press Dimensions	A	940	Minimum Tool Height (Ram BDC, Adjust down)		260-255
	B	760			
	C	1170			
	D	175	Ram Adjust		40
	E	470			
	F	210	Standard Speed Range		150-400
	G	250			
	H	390	Motor kW (hp)		1.5
	I	520			
	J	103	Weight kg Press		650
	K	125	Stand		200
	L	60			
	S	850	<i>Dimensions are all in Millimetres</i>		
	T	690			
	Y	15			



WORCESTER PRESSES

Titan Works, Stourbridge, West Midlands, DY8 4LR, England.
Telephone: (01384) 392266. Telefax: (01384) 374261